

# TIPP CITY EMS DIVISION



---

ANNUAL REPORT  
2008

---



## **MISSION STATEMENT**

The mission of the Tipp City Emergency Medical Service Division is to  
provide the highest quality emergency medical service  
to all people who call upon us for help  
and  
to promote safety and good will in our community.

# TABLE OF CONTENTS

## SECTION I - SUMMARY

## SECTION II - PERSONNEL

Current Staff

Status Changes

Staffing Trends

History

Employment Information

## SECTION III - OPERATIONS

General Information

Service Standards

Fees for Service

Budget Summaries

Statistical Information

## SECTION IV - TIPP EMS ASSOCIATION

## SECTION V – DEFINITION OF TERMS USED

# SECTION I



## End of Year Summary

### **Community:**

We participated in Safety City, Varsity Football games, Drill Team Competition, block parties and the Mum Festival. We had a crew on standby at the Regional Football Playoffs held at Tipp City.

We received 12 compliments for excellent service. There was 1 complaint about the no transport fee and 1 regarding bedside manner.

### **Personnel:**

We added three new volunteer EMT-Basics this year; Kyle Colbert, Michael Whitby and Debbie Martin. EMT-Basics Nick Carpenter and Anthony Miller completed paramedic training.

EMT-Basics Dave Shock, Don Chaney and Eric Brazel completed 5 years of service. Chief Senseman completed 20 years of service.

### **Operations:**

Our quality assurance program tracked 29,288 medical actions required of our crews. Only 280 actions were not completed. Thus, the crews achieved a 99.3% compliance with medical protocol.

We completed installation of the new data base and were sending data to the State until they made changes in October that sent us back to our software developers for help. The State says they fixed problems associated with the changes but we are still unable to send data. They have not determined what is wrong with their system. We are continuing to enter data locally.

There were increases in stroke, cardiac, respiratory and motor vehicle crashes in Monroe Township. Though total call volume for the City and Township changed very little, the Township saw an increase of 70 calls. These calls were mainly in the age 60 and up group and crashes. The City saw a second year of decreased activity, notably in calls in the age 60 and up group.

### **Planning:**

We will retire a 10 year old ambulance with 94 thousand odometer miles or about 144 thousand engine miles.

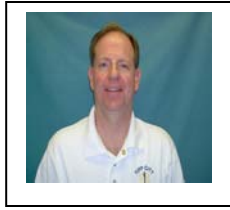
# SECTION II



## CURRENT STAFF

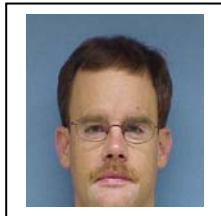
### MANAGEMENT STAFF

#### Chief



Mark Senseman. BSME, NREMTP, BTLS-I, ACLS-I, PALS-I, State EMS Instructor, PBTL, FF1, Fire Safety Inspector, Hazmat Technician, NIMS, Incident Command, Trench Rescue, Confined Space Rescue, Crash Rescue, EVO, First Aid and BLS instructor. Emergency Operations Management, Weapons of Mass Destruction Operations. Beginning 14th year as Chief and 21st year with Tipp EMS. 29 years experience in EMS. Full time.

#### Assistant Chief



Gary Jackson. EMTP, BTLS, ACLS-I, Crash Rescue, Confined Space, Vandalia Police Officer, Fast Water Rescue, FF1A, BLS-I, Incident Command. Beginning 16th year as Assistant Chief and 29th year with Tipp EMS. Gary served as Acting Chief in 1993. 30 years EMS experience. Received the Meritorious Service Medal. Volunteer.

#### Supervisors



Jeff Calicoat. EMT-P, ACLS, PALS, BTLS, Crash rescue Confined Space Rescue, Trench rescue, BLS-I, Incident Command. Jeff has 17 years experience all with Tipp EMS. Dual status part time and volunteer.



Brenda Holfinger. Paramedic, BSBS. EMTP, ACLS, BTLS-I, FF1, DMAT, Hazmat Tech, Incident Command, Confined Space Rescue, BLS-I, PALS, Former Assistant Chief at Tipp EMS. Beginning her 18th year with Tipp EMS. She has 24 years experience in EMS. Part time.



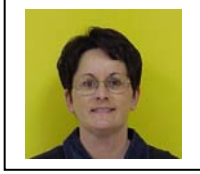
Mike Honeymann. EMTP, EVO, Hazmat awareness, Crash rescue, Incident Command. Beginning his 12th year with Tipp and in EMS. 12 years of experience in EMS. Part time.



Daniel Shoup. EMT-P, EVO, ACLS, PALS, PHTLS, FF1. 7th year with Tipp and 8 years in EMS. 1st year as a Supervisor. Dual Status.

## LINE STAFF

### Paramedics



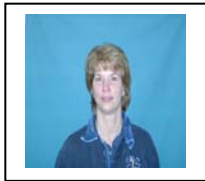
Penny Riter. EMTP, ACLS, PALS, Extrication Rescue. Beginning 13th year of experience all with Tipp EMS. Part time.



Joanna Pittenger. EMTP, ACLS, Crash Rescue. Beginning 18th year with Tipp EMS. 23 years experience in EMS. Volunteer.



Mary Shock. EMTP, EVO, Crash Rescue, BLS-I, ACLS-I., EMS Instructor. 7th year with Tipp EMS, 12 years EMS experience. Part time.



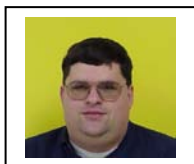
Stephanie Harris. RN, EMTP, PALS, ACLS. 7th year with Tipp EMS, 11 years EMS experience. Part time.



Tom Harris. EMTP, EVO, HazMat Tech., Confined Space, Crash Rescue, PALS, ACLS. 7th year with Tipp 17 years in EMS. Acting Supervisor. Part time.

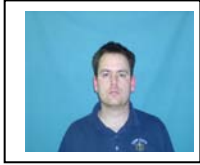


Raquel Loy. EMTP, ACLS, PALS, PHTLS, Confined Space, Incident Command, Hazmat Ops. Beginning 12th year with Tipp EMS. 14 years experience in EMS. Part time.

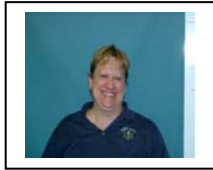


Dale Lavey. EMTP, Extrication rescue. ACLS, PALS, PHTLS,

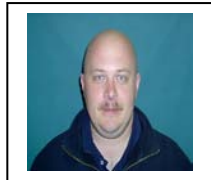
Beginning 12th year with Tipp EMS. 17 years experience in EMS.



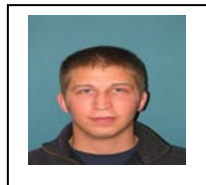
Mike Mathes. EMT-P, FF II, HazMat awareness, 7th year with Tipp EMS and 8 years in EMS. Part time.



Debbie Hamilton. EMT-P ACLS, BTLs, BTLs, ACLS. 5th year with Tipp and 18 years EMS experience. Part time.



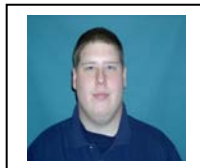
Tim Steinman. EMT-P. 2<sup>nd</sup> year with Tipp EMS 13 years in EMS. Part time



Ryan Havenar. Paramedic. 3<sup>rd</sup> year with Tipp and 5 years in EMS. Part time.



Nick Carpenter. Paramedic, FF1. 2nd year with Tipp EMA and in EMS. Volunteer.



Anthony Miller. Paramedic, FF2. 8th year with Tipp and 9 years as EMT. Dual status.

EMT Intermediate

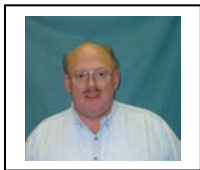


Ian Lees. EMTI, Extrication and Confined Space Rescue. In 10th year of service with Tipp EMS. 13 years of EMS experience. Dual status.

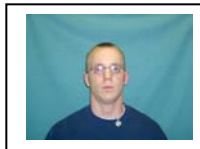
#### EMT Basic



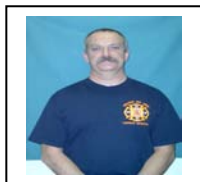
Robert Brazel. EMTB, Extrication and Confined Space Rescue, FF1, Police Officer. Beginning 9th year of experience all with Tipp EMS. Volunteer. Vandalia Police Officer.



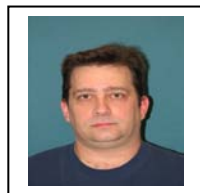
David Shock. EMTB, FF1a, Fire Safety Inspector, HazMat Awareness, Extrication. 6th year with Tipp EMS. 32 years in EMS. Part time.



Eric Henry. EMT-B, FF1. 4<sup>th</sup> year with Tipp EMS. 5th year EMS experience. Paramedic student. Part time.



Tony Fleet. EMT Basic. 4th year with Tipp EMS. 4 years EMS experience. Part time.



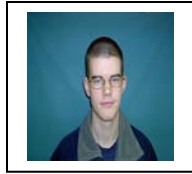
Phillip Baldwin. FF1a, BLS, HazMat Ops, Confined space. 4th year with Tipp EMS and 7<sup>th</sup> year of EMS experience. Volunteer.



Cassandra Fisher. EMTB. 2nd<sup>t</sup> year with Tipp EMS and in EMS. Dual Status.

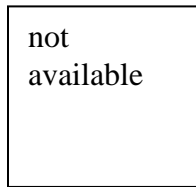


Debbie Martin. EMTB. 1<sup>st</sup> year with Tipp EMS. 3 years of experience.



Michael Whitby. 1<sup>st</sup> year with Tipp EMS and 1<sup>st</sup> year of experience.

### MEDICAL DIRECTOR



Denise Grove, MD, Emergency Department, Good Samaritan and Kettering Hospitals. Beginning her 18th year with Tipp EMS. Two years as Assistant Medical Director, 16 as Medical Director.

### 2008 STATUS CHANGES

<u>Employee</u>	<u>From</u>	<u>To</u>
Carpenter	EMT Basic	Paramedic
Miller	EMT Basic	Paramedic
Colbert		New hire volunteer EMTB
Martin		New hire volunteer EMTB
Whitby		New hire volunteer EMTB
Wertz	EMTP dual status	Resigned for full time in Nashville TN

### STAFFING TRENDS

We continue to find replacements for retiring volunteers by targeting young adults who desire to enter public safety. We have two EMT-Basics who have expressed interest in joining and two more in training.

### HISTORY

Citizens and members of the Fire Department formed an Emergency Medical Service (EMS) Association in January of 1975 when they realized the City needed a trained medical response crew. Frings and Bayliff funeral home provided the service up to this time. The City formally

accepted the EMS Division in March of 1975. The EMS Division was established independently from the Fire Department because many volunteers did not have the time to be involved in both organizations. Authorization for the EMS Division is in Chapter 35 of Tipp City Code.

The EMS Auxiliary operates for fund raising, Division social activities and promotion of CPR and First Aid education in the community. In 1996, the EMS Auxiliary attained tax exempt, charitable status.

### **EMPLOYMENT INFORMATION**

The EMS Division is composed of one full-time, thirteen part-time and sixteen paid volunteer staff. Six of the part-time staff have dual status as volunteers. Dual status staff and volunteers must live in Tipp City or Monroe Township. Full-time staff must live in Tipp City. Part-time staff does not have a residency requirement. City, State and Federal Code govern personnel matters. The City has established minimum employment standards regarding physical and mental capability. The City provides worker's compensation for all staff. In addition, the volunteers receive pay for on duty activities and supplemental injury insurance. Full-time and part-time staff members receive benefits established for each position.

The State of Ohio certifies all personnel as Emergency Medical Technician (EMT) Basic, Intermediate or Paramedic. Our staff trains in motor vehicle crash, confined space, hazardous material and trench rescue activities. Training time for certification as an EMT begins at 152 hours for Basic, an additional 100 hours for Intermediate and an additional 800 hours for Paramedic. We conduct most of our training at the Safety Building. The Division provides 48 hours of training in house and pays for training sponsored by other schools. We are a State certified continuing education school.

# SECTION III



## **GENERAL INFORMATION**

The Division operates three ambulances equipped with advance life support equipment. Each ambulance has a value of \$116,000 and contains \$38,000 of equipment and supplies. The utility trucks are used for BLS first response by the Officer on Duty and Chief, off road rescue and other staff activities. They are valued at \$38,000 and carry \$6,500 in equipment. The truck used by the Chief is 10 years old.

Normally, we assign an on duty staff of one Paramedic and two EMT's to the first due ambulance. An Officer on Duty and an EMT are assigned to the second ambulance. Any available staff responds to calls for the second or third ambulance. The Fire Department is automatically dispatched on any call involving rescue operations. Part-time and full-time staff members stay in the station while on duty. Volunteers carry a pager and must remain in Tipp City or Monroe Township while on call.

We operate three ambulances from the Safety Building at Hyatt and Main. The EMS Division maintains disaster supplies at the Safety Building and uses the building as an Emergency Operations Center.

Our service area includes Tipp City and Monroe Township. We respond in a 36 square mile area inhabited by 18,000 people. The staff responds to emergencies in agricultural, residential, business and industrial settings. Transportation hazards include I75, CSX railroad and the aviation corridors of Dayton International Airport.

## **SERVICE STANDARDS**

The National Fire Protection Association (NFPA), Occupational Health and Safety Administration (OSHA), the Center for Disease Control, the State of Ohio Department of Public Safety, Greater Miami Valley EMS Council, Region II Physicians Advisory Board and Tipp City establish operational practices and standards. The Division has a manual of Standard Operating Guidelines that incorporates the practices and standards of the various controlling bodies mentioned.

The staff works through the licenses of our Medical Director, Dr. Denise Grove; Fellow of American College of Emergency Physicians. Dr. Grove is on staff at the Emergency Department of Good Samaritan Hospital and Kettering Medical Center.

Tipp City EMS Division consistently meets or exceeds the requirements of the governing agencies and evaluation groups. Our professionalism frequently results in comparison to and placement with full time operations in the greater Dayton area.

To assure continued quality of service five steps are taken. (1) Our Medical Director reviews staff performance, participate in training and respond to calls. (2) The Officers conduct annual personnel evaluations. (3) The various Hospital EMS Coordinators review our call reports. (4)

All training requires passing test scores. (5) We have a safety committee that reviews our practices, tracks accidents and injuries and makes recommendations for improvement.

	Time to get in route	Time to get to scene	Time on scene	Time to get to hospital	average length of transport call
National Standard full time staffing	1 min or less	4 min or less	15 min or less	20 min or less	1 hr 45 min
National Average	10 min	9 min	20 min	20 min	1.5 hrs
Tipp City EMS	2 min	3 min	16 min	16 min	1.5 hrs

The average time from dispatch to arrival of first unit on scene in the City is dependent on location. East of I75 is 3 minutes, west of I75 is 5minutes. For the Township there was no difference, arrival time is five minutes. Average transport time to the area hospitals is:

Upper Valley - 13 minutes	Grandview - 13 minutes
Children's - 20 minutes	GoodSam - 22 minutes
Miami Valley - 23 minutes	Dayton Heart - 23 minutes

### FEES for SERVICES

Tipp City EMS Division is a fee for service operation. We began charging for services in 1985. The fees supplement the money that comes from the general fund of the City. Thus, we can avoid increasing the percentage of our budget that comes from tax dollars. When we started charging for service most public services did not. By 2000 about one half of public EMS services charge for service and the number continues to increase.

The following table shows our charges and compares Tipp City to the regional average.

	Basic Life Support	Advance Life Support -1	Advance Life Support -2	Mileage
Tipp City	\$590.00	\$700.00	\$650.00	\$12.00
Regional	\$600.00	\$800.00	\$1030.00	\$13.00

## BUDGET SUMMARIES

### OPERATING BUDGET

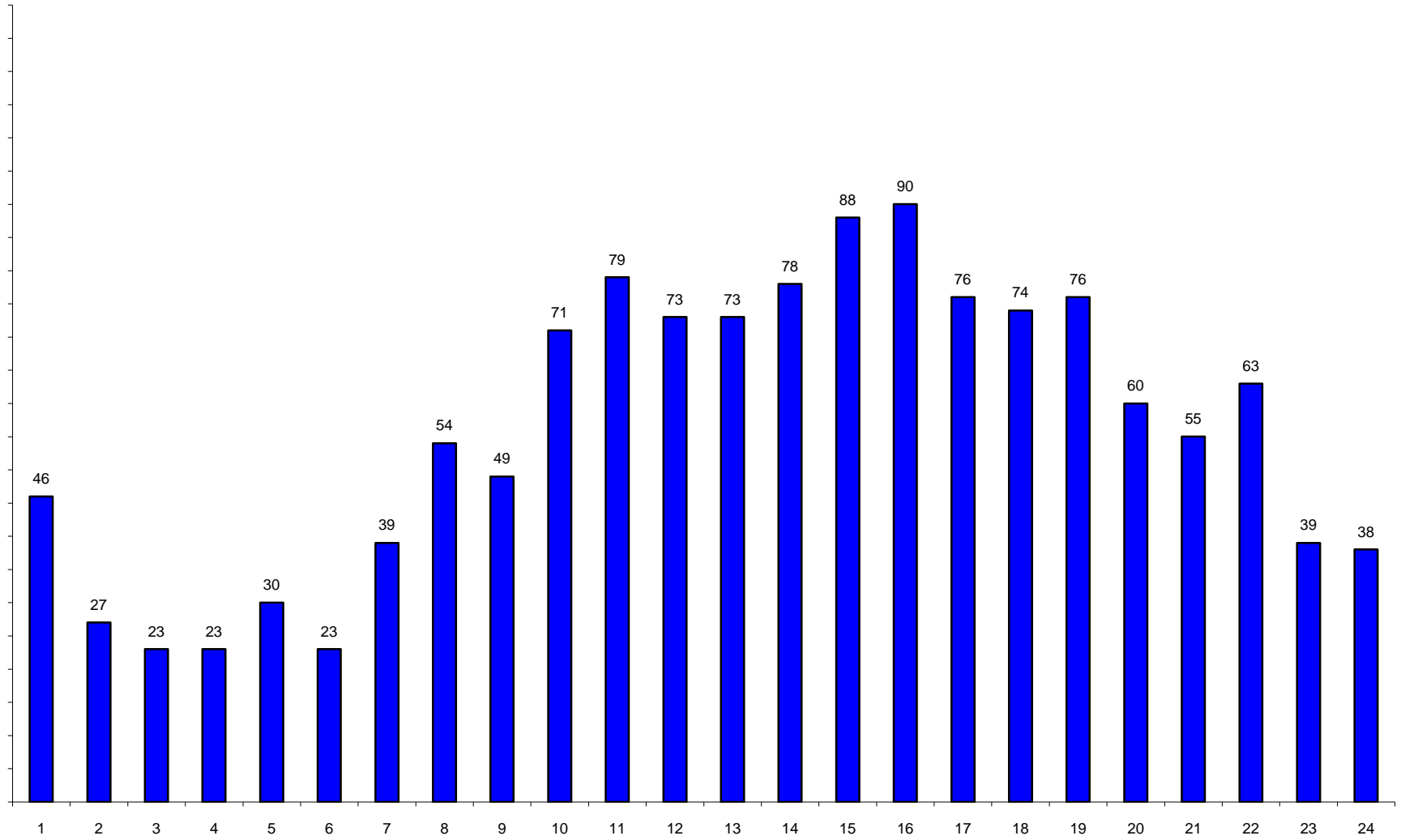
2007	2008 proposed	2008 revised	2009 proposed
524350	551087	565216	578059
72662	90011	95377	80928
5339	7990	7930	8382
11427	12200	11931	12500
12068	14283	13309	17088
96	125	96	130
1593	2300	2170	2300
5430	5430	5430	5640
632,965	683,426	701,459	705,027
7,800	10,000	9,000	10,000
9,650	12,014	10,894	11,800
29,000	29,000	25,000	30,000
600	1,200	1,200	1,045
0	530	0	0
6,800	7,280	7,000	7,480
5,200	5,171	5,171	5,300
8,600	7,500	7,500	7,500
4,000	4,000	4,000	4,000
10,463	10,980	10,749	8,550
0	100	0	100
500	360	360	360
850	1,035	1,000	1,000
2,470	2,270	2,270	2,350
2,640	3765	3,765	5,265
13,000	13,675	15,870	16,997
6,710	6,900	9,000	7,340
1,200	1200	1200	1,200
109,483	116,980	113,979	120,287
2,225	3,600	1,200	0
744,673	804,006	816,638	825,314

### CAPITAL PLAN SUMMARY

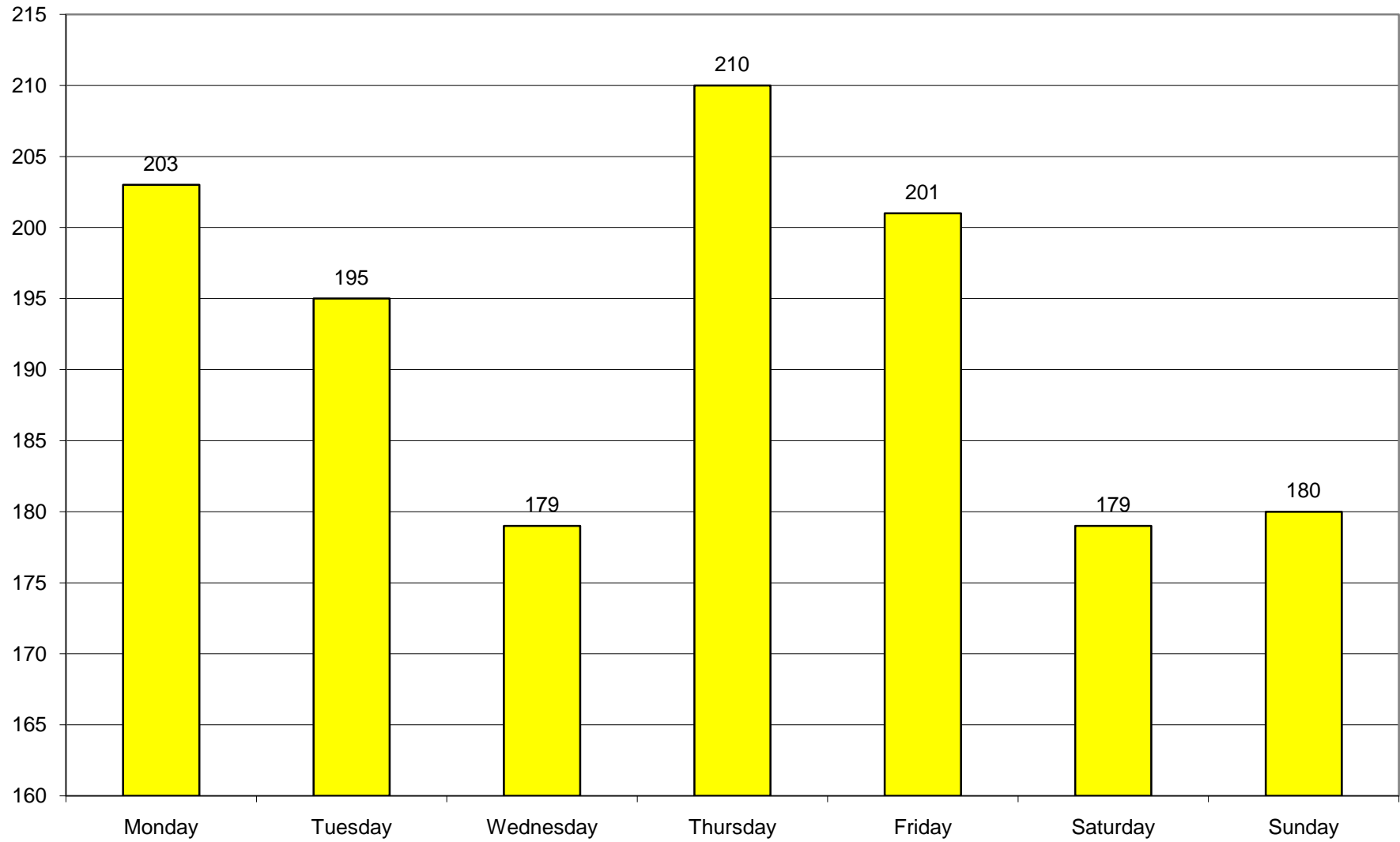
ITEM	(P)	2009	(P)	2010	(P)	2011	(P)	2012	(P)	2013
FR Truck									1	\$50,000
Ambulance	1	\$130,000					1	\$150,000		
800Mhz Radios			1	\$12,000					2	\$13,000

# STATISTICAL INFORMATION

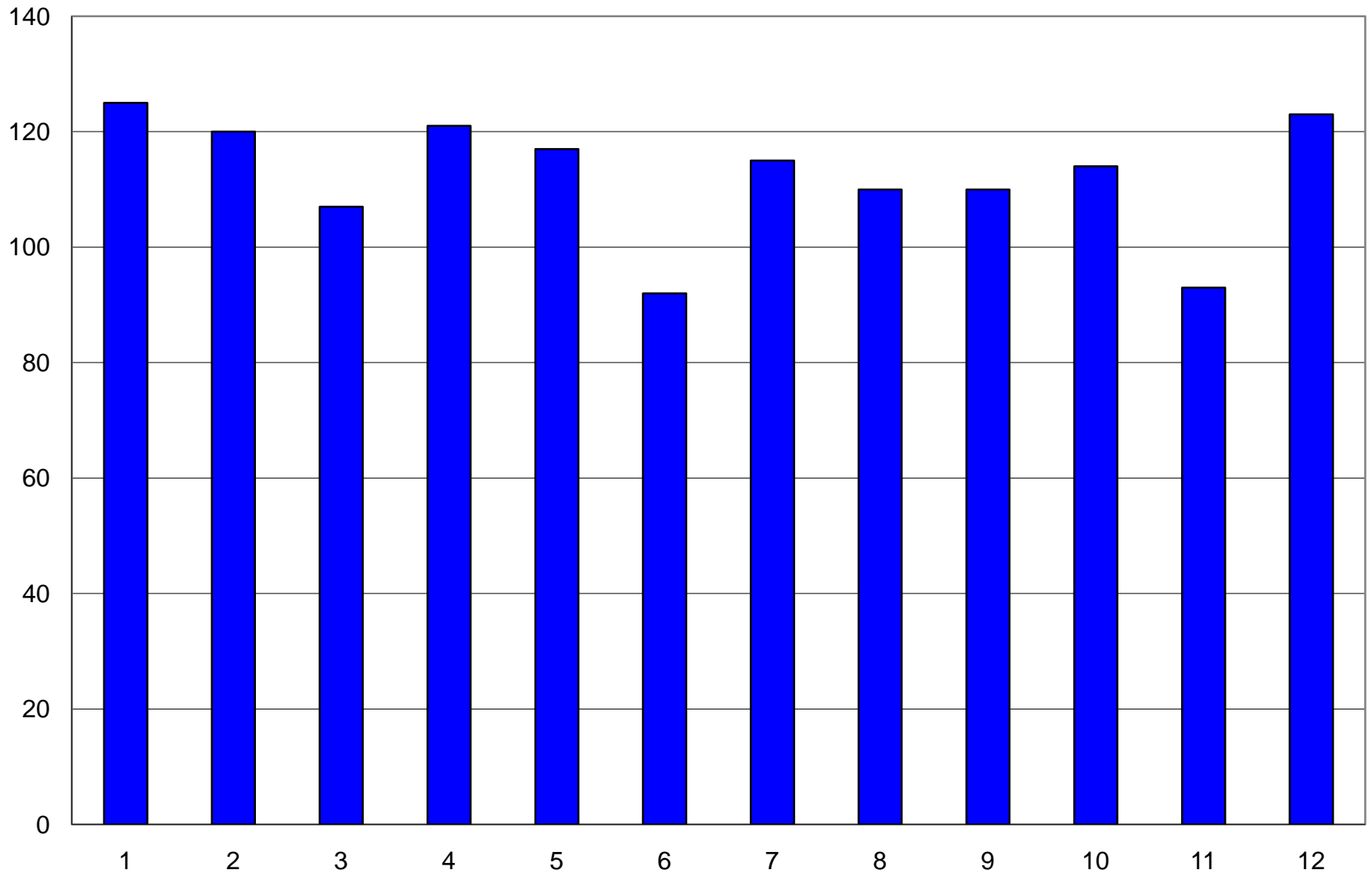
## 2008 Calls by Hour



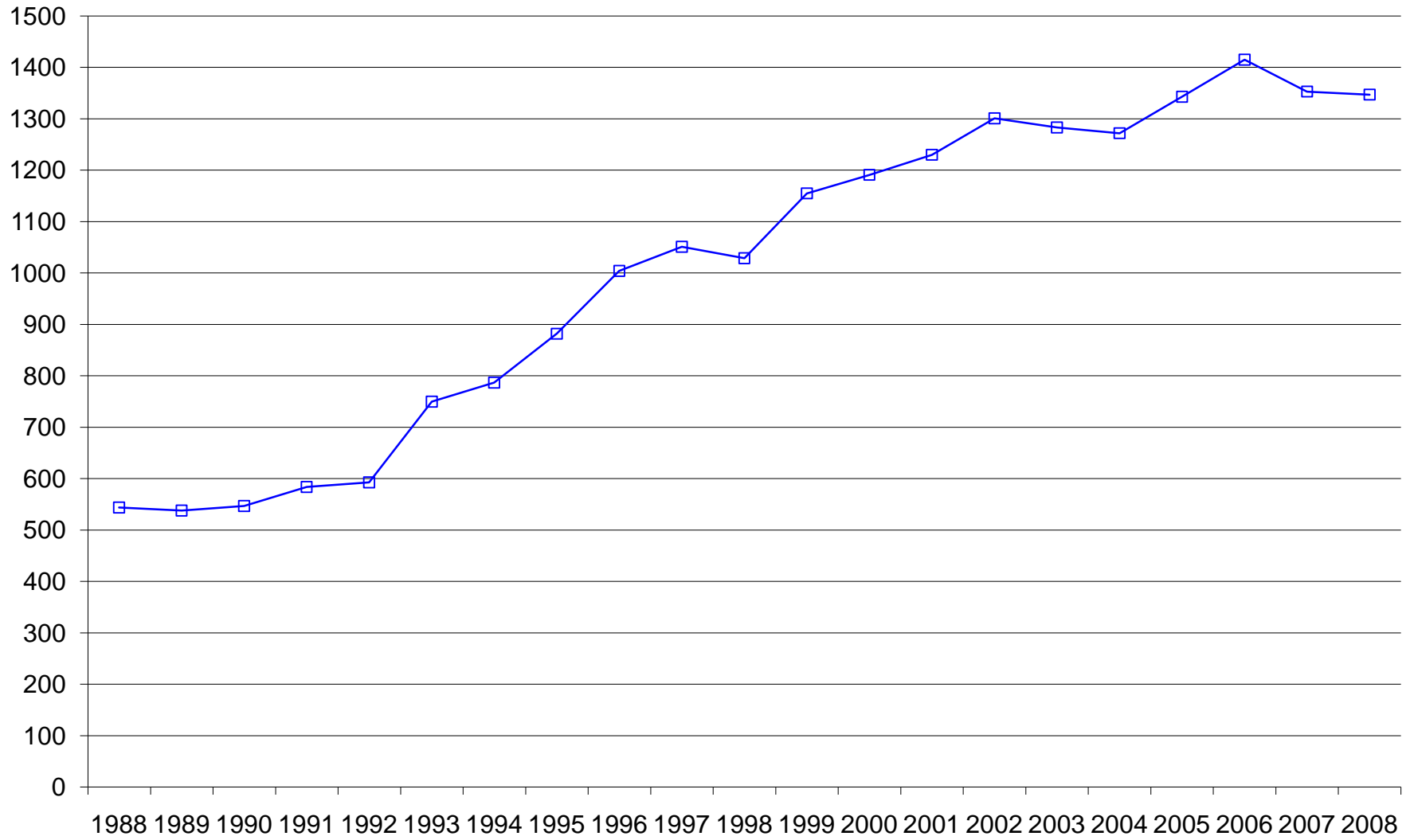
### 2008 Calls by Day of Week



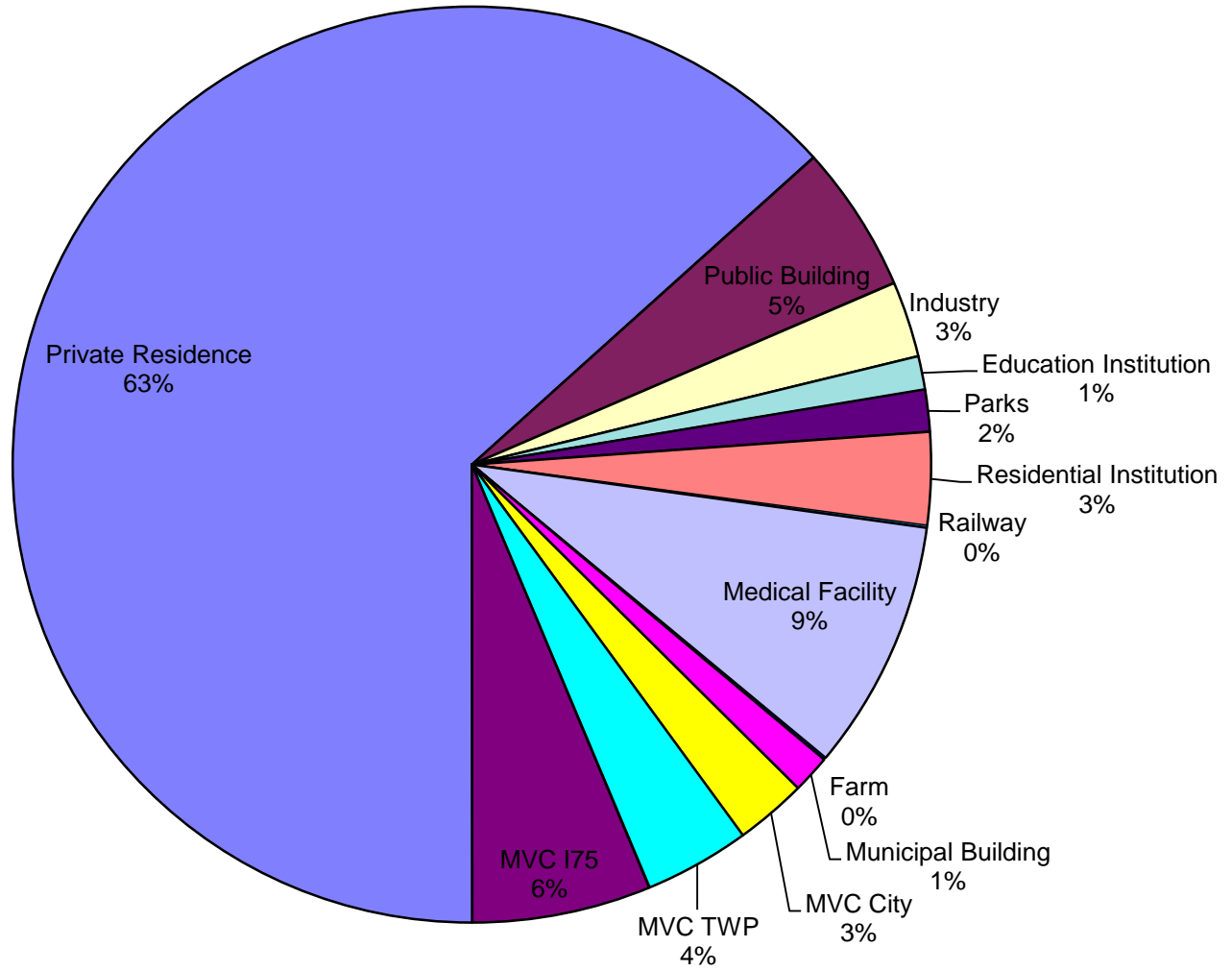
2008 Calls by Month



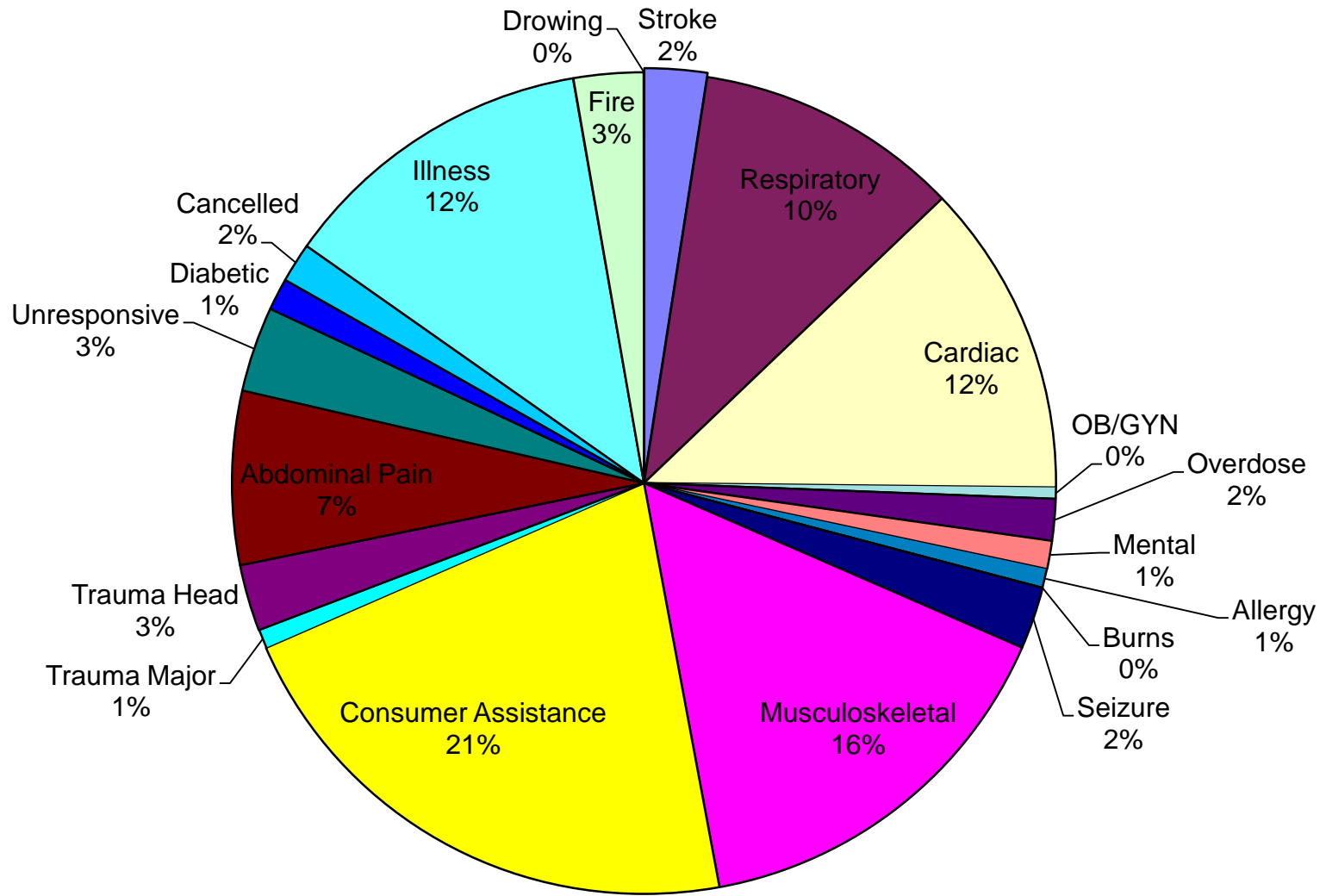
# Total Call Trend



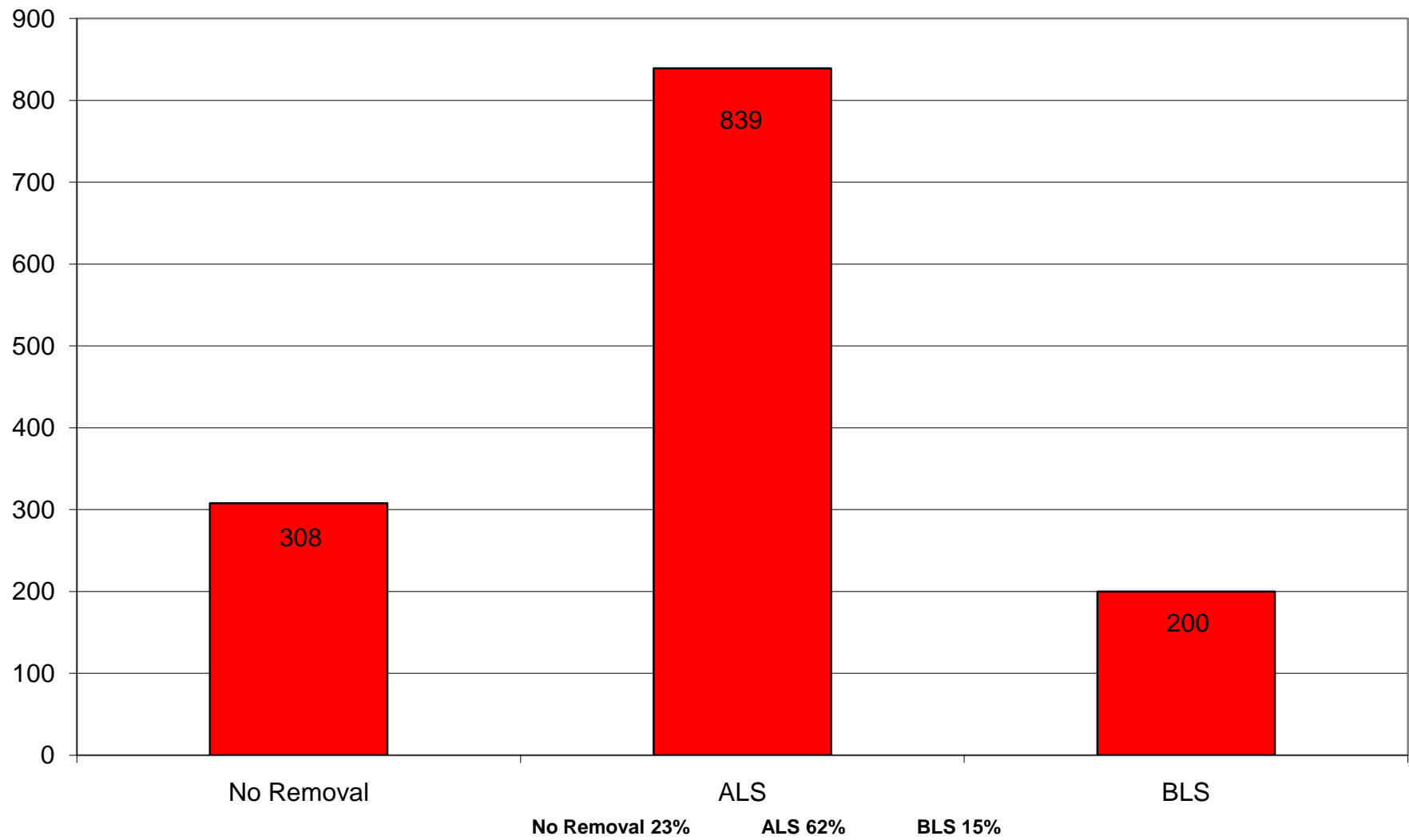
2008 Calls by Location



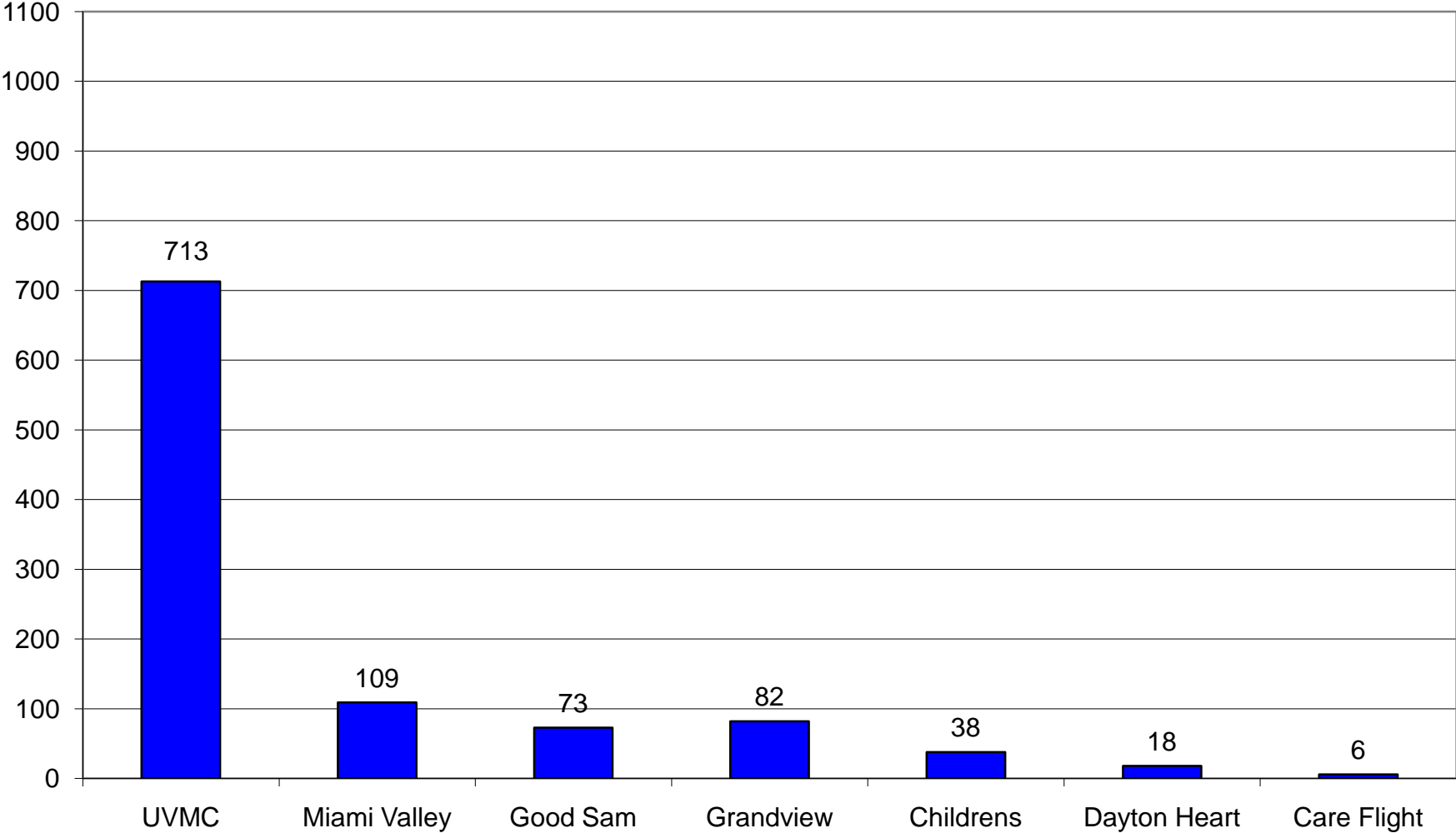
### Nature of Call



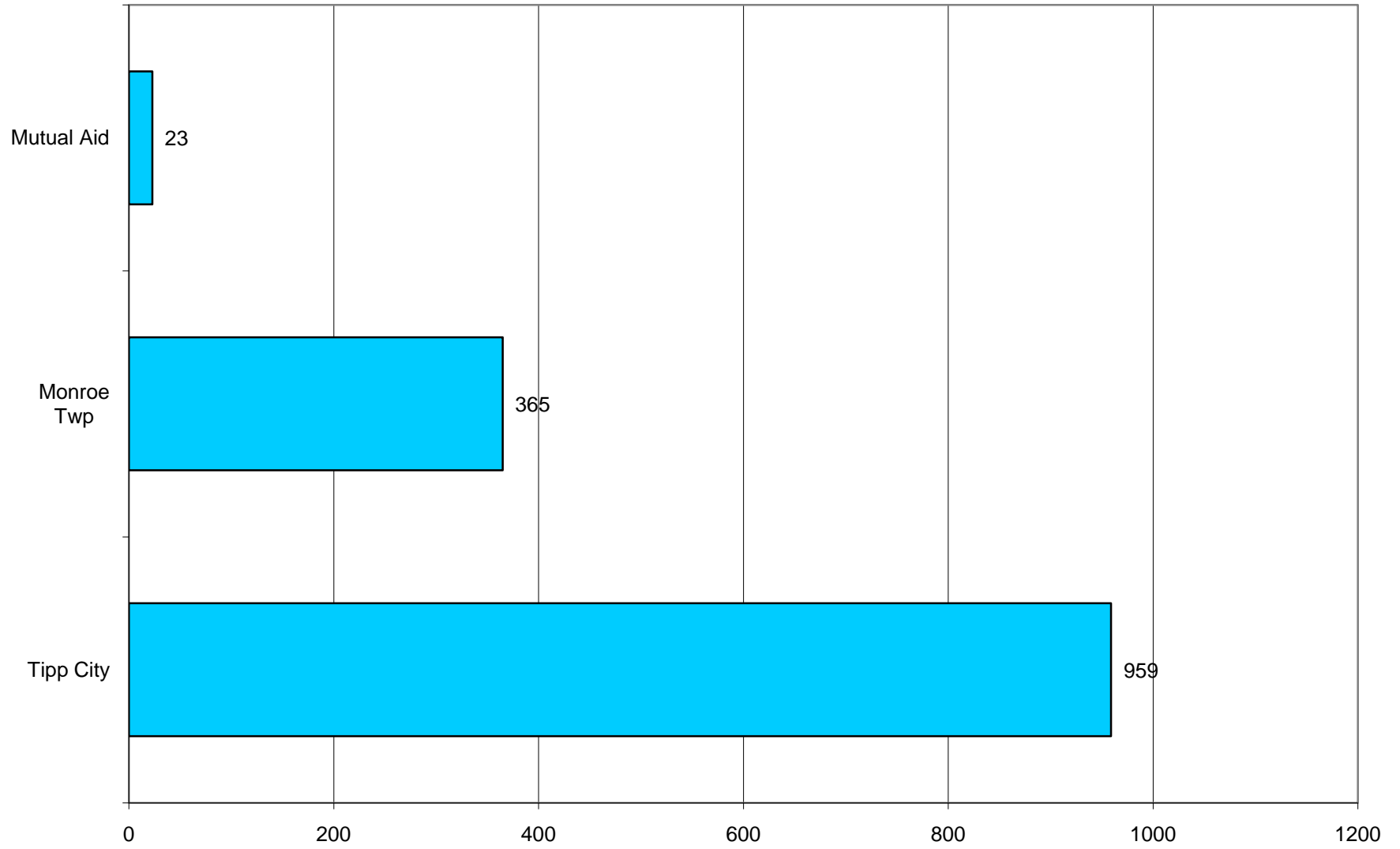
## 2008 Calls by Level of Service



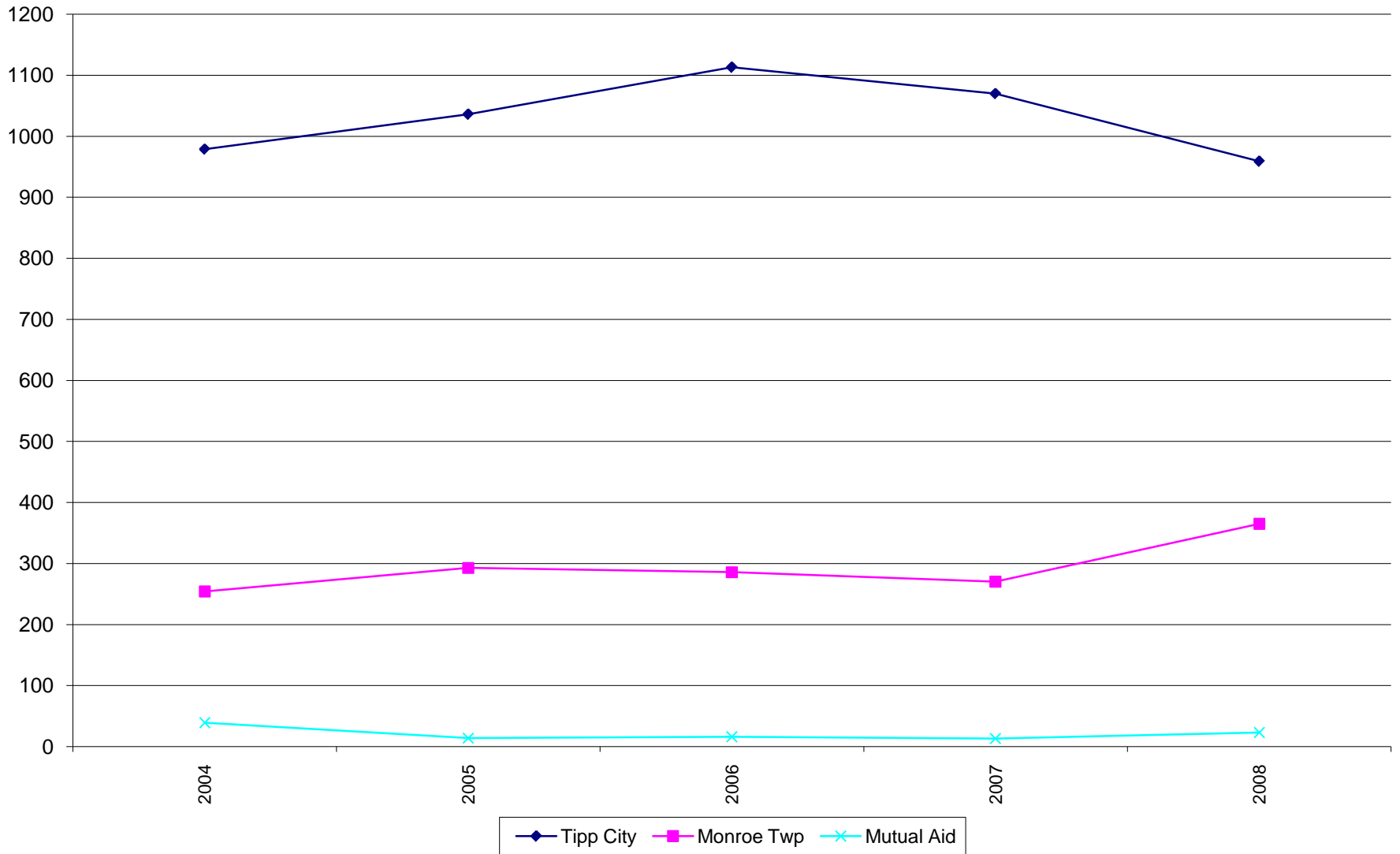
# Transport Destination 2008



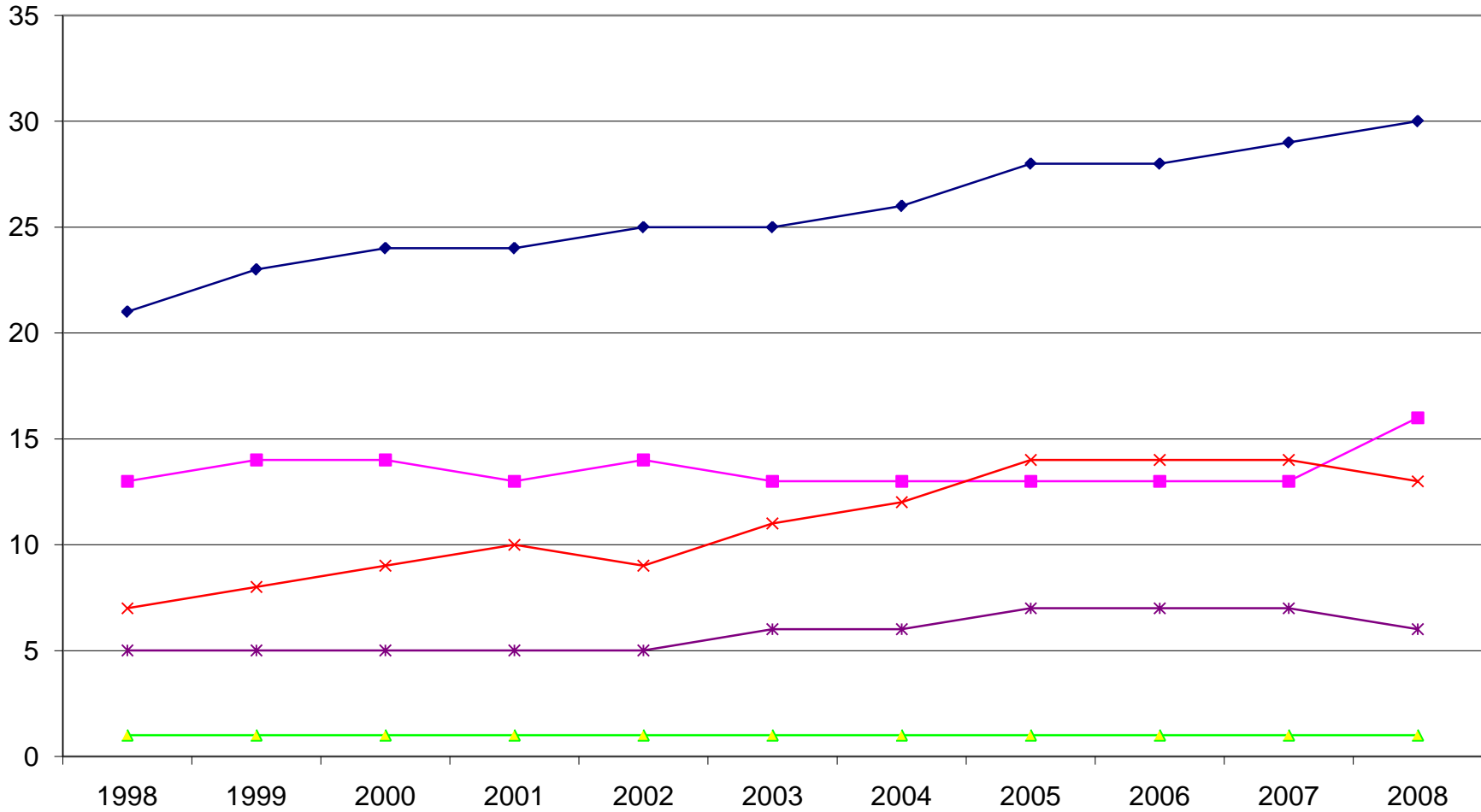
### 2008 Calls by Locality



### Calls by Locality Trend



# Staffing Trend



—◆— total staff —■— volunteer —▲— full time —×— part time —\*— dual status

# SECTION IV



## PRESENT STAFF

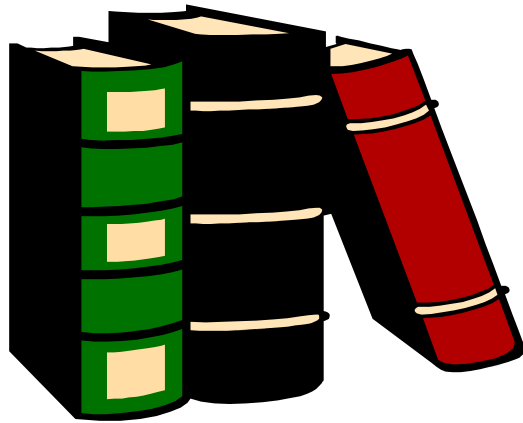
President	Joanna Pittenger
Secretary	Raquel Loy
Treasurer	Raquel Loy
Trustees	Penny Riter Gary Jackson Jeff Calicoat

## ACTIVITIES

New Officers were elected. At the EMS Week recognition dinner in May, service awards were given to various members. The Auxiliary assisted at the Mum Festival, sponsored an open house during EMS Week and a Christmas dinner.

The CPR Instructors taught CPR to 169 citizens.

# SECTION V



## GLOSSARY OF TERMS

ACLS	- Advanced Cardiac Life Support
AED	- Automatic External Defibrillator
ALS	- Advanced Life Support
BLS	- Basic Life Support
BTLS	- Basic Trauma Life Support
Care Flight	- helicopter ambulance operated by MVH
CMC	- Children's Medical Center
Confined Space	- training to enter confined spaces for rescue, highest risk rescue performed in emergency services
Consumer Assistance	- responded to call where no medical treatment was given and no removal was made
CPR	- Cardio-Pulmonary-Resuscitation
DHH	- Dayton Heart Hospital
DMAT	- Disaster Medical Response Team
EMT-B	- Emergency medical technician Basic, 140 hours training
EMT-I	- Emergency medical technician Intermediate, 340 hours training
EMT-P	- Emergency Medical technician paramedic, 1540 hours training
EVO	- Emergency vehicle operations training
FFI	- Basic firefighting, 108 hours training
FFII	- advance firefighting, 240 hours training
Water Rescue	- training for rescue from water
First Responder	- EMT who responds to a call directly with BLS equipment
GSH	- Good Samaritan Hospital
GVH	- Grandview Hospital
Hazmat Technician	- Hazardous materials responder with 120 hours training
Hazmat Operations	- Hazardous materials responder with 40 hours training
Hazmat Awareness	- Hazardous materials responder with 4 hours training
-I	- instructor
Incident Command	- training in the Incident Command System
PALS	- Pediatric Advance Life Support
P-BTLS	- Pediatric Basic Trauma Life Support
PERS	- Public Employees Retirement System
Rope Rescue	- training in use of ropes for rescue from high places
State EMS Instructor	- teaches all EMT levels
MVC	- motor vehicle crash
MVH	- Miami Valley Hospital
LifePac-12	- Cardiac monitor with manual defibrillator and external cardiac pace maker
NT	- No transport was made, includes Consumer Assistance and Treat and release
Treat and release	- responded and provided minor medical care and patient refused transport

Trench Rescue	- training to enter trenches for rescue
UVMC	- Upper Valley Medical Center
Water Rescue	- training for rescue from water that is not moving
WMD	- Weapons of Mass Destruction